

SUBURBAN WORK:

Curb Appeal Renovation in Parkville, MO – Tired and dated apartments sport a new look with redesign efforts.

The before photo shows closed in balconies and lacking landscaping along with a bland color scheme.



BEFORE



AFTER

The after color rendering of this complex shows a dramatic use of color that draws attention to the entry door. Open balconies create a more hospitable image while flowers shrubbery and tree plantings create a sense of home and respectability important to rental units.

CURRENTLY WITH TOUCH OF DISTINCTION (1ST QTR. - 2011) COLOR & DESIGN NEWSLETTER



(816) 931-9145

Adding value by infusing period architecture with the modern lifestyle

- Paul Helmer – principal -

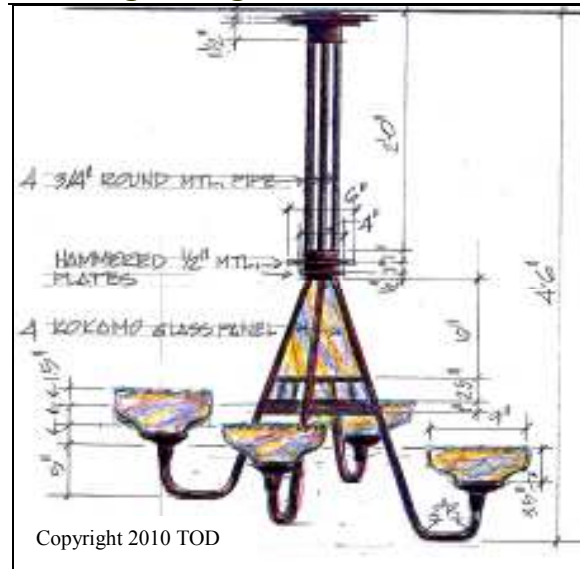
web: todkc.net

HELPFUL IDEAS



Your newsletter with help for design & color

QUESTION - I have an Arts & Crafts house which needs a large Dining Rm. Chandelier. I can't find one the right scale or the right design. What should I do?



Copyright 2010 TOD

RESPONSE - *This chandelier for a Hyde Park residence answers this question.*

URBAN WORK:

This last year has grown our business in many ways: – dramatic signage, period chandelier design, working with fellow contractors and vendors has impacted more clients than our own. Our color renderings have helped other designers end up with more satisfying colors, designs and happier clients. We continue to experience client growth. Even though we have done projects in: Chicago, SantaFe, St. Louis and Southern Missouri, we continue to be one of the most economical companies for clients to work with.



Enhance your Art Frame Shop at -----

has undergone a color and sign transformation with a little TOD help.



Commercial color should, by all rights draw attention. Here gold responds to the gold tone entry door and a purple colored logo. Strong black used on windows and trim now frames the dramatic business sign. . Planting boxes anchor signage and doorways.



BEFORE



AFTER

This Nall Avenue home in Prairie Village, KS went up for sale this year and needed a little help to give its boring and schizophrenic exterior a more harmonious look. White trim made the brick chimney too dominant.

Two shades of sage green unified siding and trim. Shutters, not appropriate for a ranch style of this type were removed and a dramatic russet red was used on the entry and side-lights. A tie-in with this russet color was the use of a lighter russet on the soffits which helped make the eaves more substantial in appearance. New landscaping made the front dramatic and enticing to passers by.

Sometimes it is difficult to find an appropriate light fixture. Either the scale is wrong or the designs are lame, hence enters a custom design fixture. T.O.D. designed this light fixture. Its hand blown shades and metal frame with a center down light has a bronze finish. The homeowner may have paid more than for a stock fixture but our homes are investments and aren't we worth the extra beauty that a custom fixture makes?

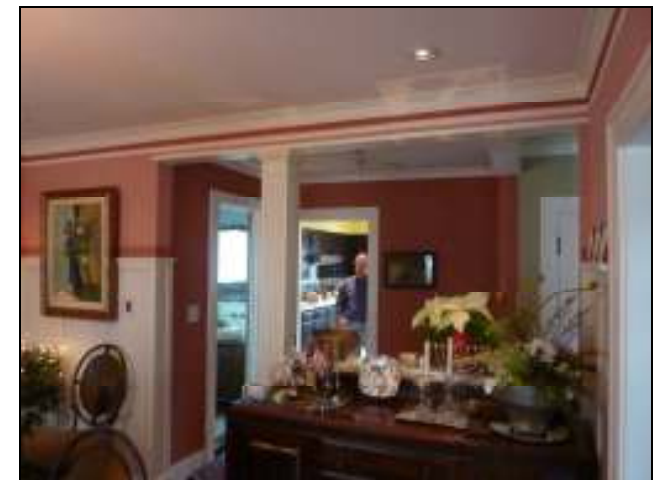


This Older home in St. Joseph, MO had a very steep front bank – hard to mow and difficult to grow grass on. Several years of work with TOD has eliminated the bank and given delightful textures to draw people up the stairway to the homes front door.

This Brookside Residence had a tight and drab Dining Rm. – cacky green walls darkened and pulled the walls in on this northwest facing room. With only one window, the room looked anything but inviting for dinners and family events.

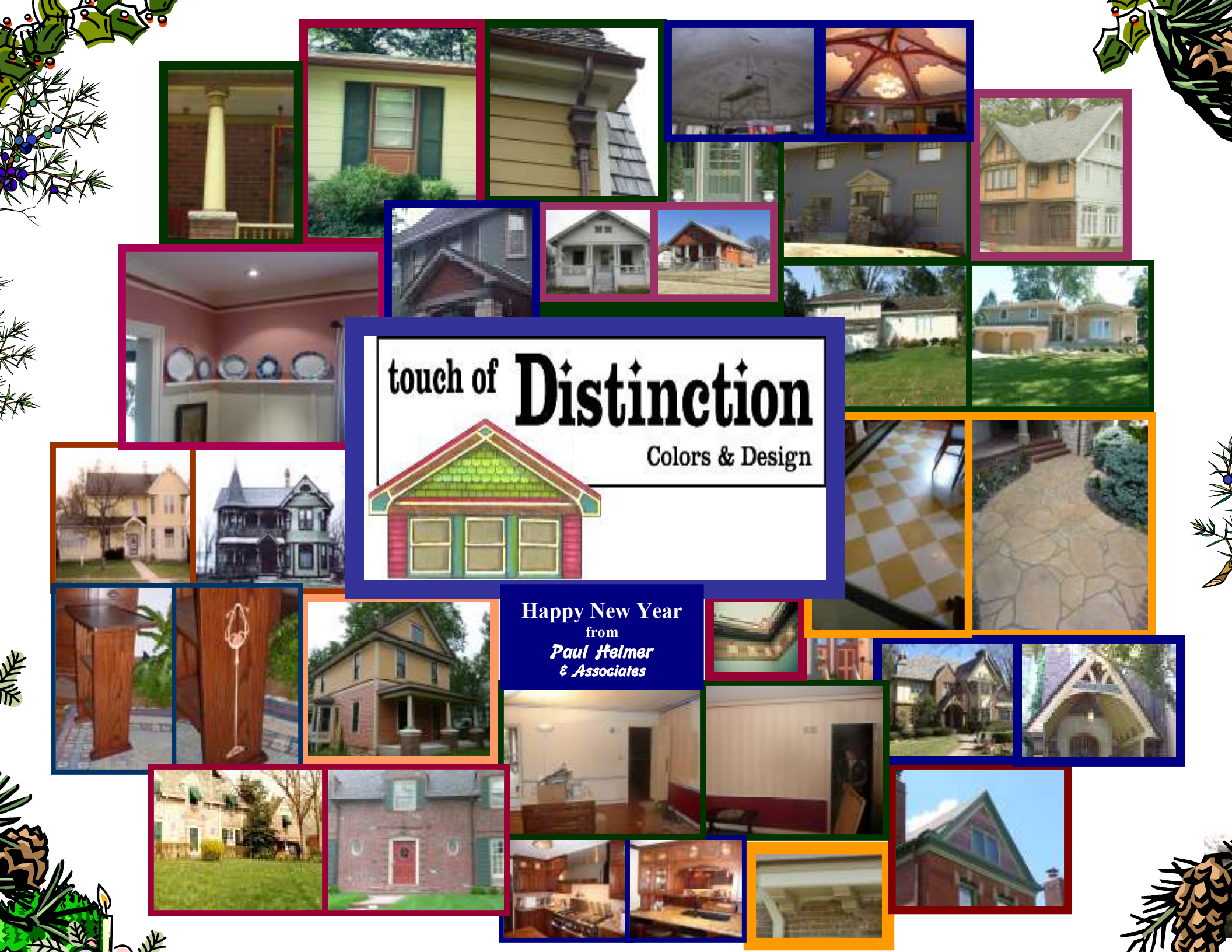


BEFORE



AFTER

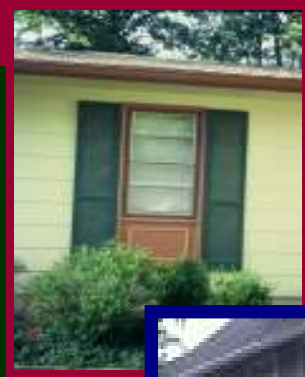
The same room today sports an opened wall with a free standing Tuscan style column. The addition of library paneling and a plate rail create a sweeping horizontal line. Two shades of salmon brighten and enliven the beautiful redo. Following will be a new built-in leaded glass pantry.



touch of **Distinction**
Colors & Design



Happy New Year
from
*Paul Helmer
& Associates*



Volker Residence

Multi-Color column detail

Harrisonville, MO – Ranch Style

AFTER color scheme/ landscape design

Countryside Residence

AFTER colors/ copper gutter/ Curb Appeal redesign

Ward Pky. Teudor

Great Rm. BEFORE

Ward Pky. Teudor

Great Rm. AFTER renovation & decorative painting

Brookside Teudor

Faux stained brick/ landscaping/ colors/ interior design

Southmoreland doorway

Brookside Greek Revival

Exterior colors/ railing design

Concord St.

Color Scheme/ garage design

Independence Bungalow BEFORE

Independence Bungalow AFTER

Lake Winebago Home - BEFORE

Bland exterior

Lake Winebago Home - AFTER

Curb appeal renovation/ colors/ front porch/ stained brick/ landsc aping

Brookside residence

New antiqued library paneling, plate rail, striping and painting

touch of **Distinction**
Colors & Design



Brookside Kitchen

Colors & designed Marmolium Floor

Hallbrook House

Faux stained sidewalk at entry

Harrisonville Victorian

BEFORE with extremely altered facade

Harrisonville Victorian

AFTER new porch design & 9 color scheme

Arts & Crafts Table

Table design

Arts & Crafts Table

Faux Wood inlay design based on Stickly

DeSoto, KS Renovation

AFTER- exterior color / interior reno planning

Where they are ????

Longfellow

ARTS & CRAFTS stenciling

Union Hill

Mission Hills Residence

AFTER - Color Scheme

Mission Hills Residence

AFTER - Porch Detail.

Ward Pky. - Dining Rm.

BEFORE – bland interior, low feeling ceiling

Ward Pky. – Dining Rm.

AFTER – Dining Rm. Painted striping and color selections

Ward Pky. Colonial Style Residence

BEFORE

Ward Pky. Colonial Style Residence

AFTER – Door design, color scheme, addition, landscaping

Union Hill Neighborhood

AFTER - multiple color schemes

Ward Pky. Kitchen

AFTER reno.

Ward Pky. Kitchen

AFTER reno.

Southmoreland

Detail - color design



Synthetic Sconces – Leafed (21”x 5”) \$20.



Bisque Madonna & Christ Child (5”x 8.5” tall) \$20.



Candelabrum (14”x 12”) \$15.



Philippines wood pedestal (3’ tall x 12”) \$75.



Lighted arrow sign (sequential) (3’ tall x 12”) \$100.



Russian Icons - Window into Heaven (4 1/8 x 3 1/2) \$60.



Ideal Yearly Booklets (25 1960's editions) - \$60.



Leather/wood document box – keepsakes -8.5 x 11 \$15.



Two new spiral leg/leatherette Spanish Stools - \$100. Brass tufted, knob capped



Ante-Bellum Plantation Homes of Tennessee - \$60. sure to become a collector's item. (11”x 14”) published in 1936, & republished in 1964.



American agrarian Antique Garden Plow - \$60. This is sure to be a focal point in your home, a restaurant or as a yard ornament



Composition Plaster Rococo Baby
Possibly from a Theater Palace (36" x 36")
\$150.



Vintage 1950's Golden Wedding Anniversary
beverage set – gold plated
\$75.



Antique Carpenter's equipment box
fascinating –sent ahead for jobs at another location. were
sent on trains – upon arrival carpenter had needed tools.
(antique tools) - \$700.



Synthetic Chandelier
Antique brass/bronze finish
12 lamps for illumination
(36" x 25")
\$60.



Large estate door
(42"w. x 6'8" t.)
from Ward Pky.
\$100.



Antique carved sofa teak wood – elaborate fruit & flower design sturdy construction
(6' 4" x 3' 4")
\$150.



**For Purchases
call
(816) 931-9145**