

## SUBURBAN WORK:

### Faux Copper for Overland Park Home

– A tired porch light goes from ordinary to spectacular with a verdigris copper hood and bronze tone finish on its body.

Instead of replacing the original porch light with a new one that may not necessarily be an improvement a faux finish was used on this fixture. Today the new look speaks for itself with added drama and color enhancement.



## CURRENTLY WITH TOUCH OF DISTINCTION

COLOR & DESIGN NEWSLETTER

(July/ Aug. - 2011)



(816) 931-9145

*Adding value by infusing period architecture with the modern lifestyle*

- Paul Helmer – principal - [web: todkc.net](http://web: todkc.net) -

## HELPFUL IDEAS

*Your newsletter with help for design & color*



**QUESTION** – My house has an ordinary metal roof above 2 box bays and a . . . y – y awn! boring copula what color should I paint them or should I replace them with a different roof?

**RESPONSE** – Often people opt for an expensive route to aesthetic problems when a thoughtful new idea is the real answer. Below is a photo of a faux finish for the roof and copula in question. Now the roof sports a verdigris copper look -- transforming and dramatic.



## URBAN WORK:



**Countryside duplex** – This Tudor influenced residence was drab until color came into play along with coordinating canvas awnings. The awnings both period and dramatic in coordinated coloration help to keep the units, which face west, from gaining too much heat.

Notice the front door colors, stucco, half-timbers and canvas awning colors. Rear views also are dramatic with this unit.

(Continued from above)

**This Suburban House** went from boring to dramatic with the addition of our antique finish on the copula roof.



**AFTER**



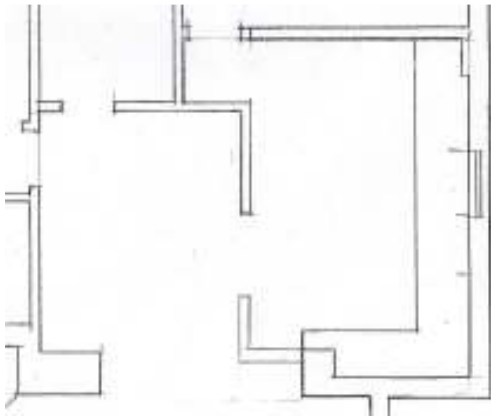
**BEFORE**



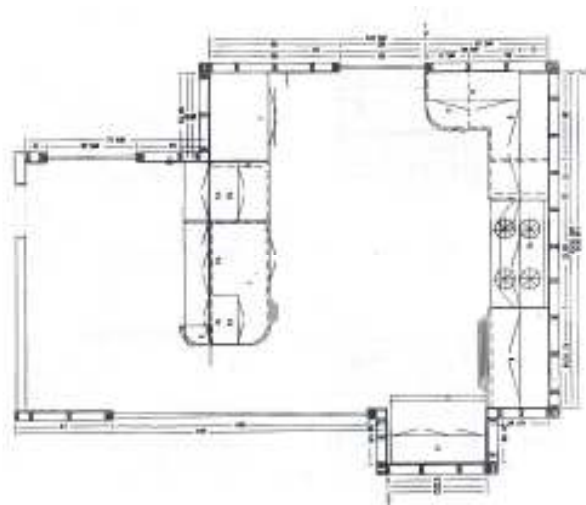
## More URBAN WORK:



**This Ward Parkway Teudor**, through a subtle color scheme, dramatizes the house with undertones taken from the stonework. Complementary green windows play the multi-pane window sashes against the red-tone brick walls.



**Before Kitchen Plan**



**After – Kitchen Plan**

### **KITCHEN RENOVATION**

Internal color schemes and a complete kitchen renovation was another job for Touch of Distinction. Here we view a floor plan that was tight with a separate breakfast room. Now the Kitchen Plan has been expanded to include the Breakfast room and to open a wall that now forms a peninsula. Stools at a granite counter now provides an updated look and expansion to this, as has been acclaimed, dazzling kitchen design.

## KITCHEN RENOVATION (continued)

Here the cabinets are of a gothic style to coordinate with the collegiate gothic doorways recurrent throughout the house. Period overhead lighting and under-counter lighting, and upper cabinet lights complete the ambiance of this space. Paired columns connect the upper cabinet to the lower unit while the peninsula cabinet has glass upper cabinet door on both sides creating a see through appearance. *Our next publication will show the 19' ceiling adjacent Great Room.*



**A peninsula cabinet adds additional cabinets and preparation space. The principal kitchen cabinets are of a traditional design with glass overhead cabinets for display of family heirlooms. A commercial grade stove completes the productive kitchen.**



# A DAY of BEAUTY: (for your yard)

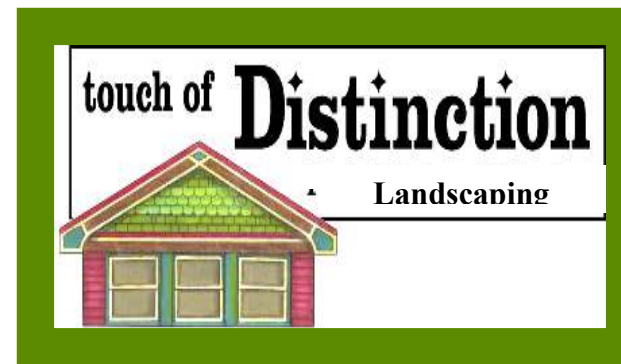
**This last year has grown our business in many ways:** – dramatic signage, period chandelier design, working with fellow contractors and vendors has impacted more clients than our own. Our color renderings have helped other designers end up with more satisfying colors, designs and happier clients. We continue to experience client growth. Even though we have done projects in: Chicago, SantaFe, St. Louis and Southern Missouri, we continue to be one of the most economical companies for clients to work with.



**A Day of Beauty** We are happy to announce a new way of serving you, your home and landscape. Not only do we design landscaping but we offer a manicure for your landscaping. Touch of Distinction offers “A Day of Beauty”. Here we work along side you or by ourselves both at a lower price than our design price tag.

## We offer:

- Trimming of shrubbery and small out of shape ornamental trees
- Cutting in edges of your landscape that are getting out of hand
- Installation of pathways including flagstone
- Planting of perennials and shrubbery
- The passing along to you of cost savings as a vendor installer







Synthetic Sconces – Gold Leafed (5”x 8.5” tall) \$20.



Bisque Madonna & Christ Child \$15.



Candelabrum (14”x 12”) \$75.



Philippines wood pedestal (3’ tall x 12”) \$75.



Russian Icons - Window into Heaven (4 1/8x 3 1/2) \$60.



Ideal Yearly Booklets (25 1960’s editions) - \$60.



Leather/wood document box – keepsakes -8.5 x 11 \$15.



Two new spiral leg/leatherette Spanish Stools - \$100. Brass tufted, knob capped



Ante-Bellum Plantation Homes of Tennessee - \$60. sure to become a collector’s item. (11”x 14”) published in 1936, & republished in 1964.



American agrarian Antique Garden Plow - \$60. This is sure to be a focal point in your home, a restaurant or as a yard ornament



Composition Plaster Rococo Baby  
Possibly from a Theater Palace (36" x 36")  
\$150.



Vintage 1950's Golden Wedding Anniversary  
beverage set – gold plated  
\$75.



Antique Carpenter's equipment box  
fascinating –sent ahead for jobs at another location. were  
sent on trains – upon arrival carpenter had needed tools.  
( antique tools) - \$700.



Large estate door  
(42" w. x 6'8" t.)  
from Ward Pky.  
\$100.



**Antique carved sofa teak wood – elaborate fruit & flower design sturdy construction  
(6' 4" x 3' 4")  
\$150.**

**For Purchases  
call  
(816) 931-9145**